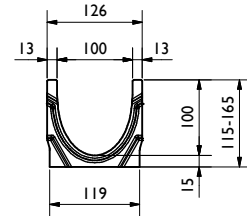
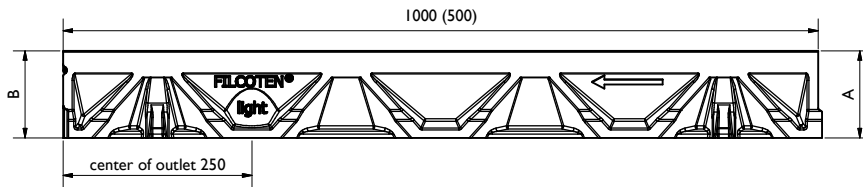
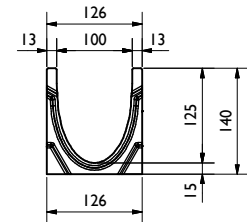
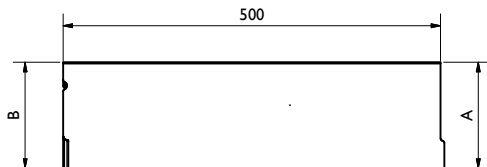


Rinne / channel:

FILCOTEN light: NW100, C250
BG code: siehe Tabelle/see table:



FILCOTEN light: NW100, C250, Nr. 5-0 für seitliche und/oder vertikale Bohrung /
FILCOTEN light: NW100, C250, No. 5-0 for side and/or vertical outlet drilling
BG code: 10311051 siehe Tabelle/see table:



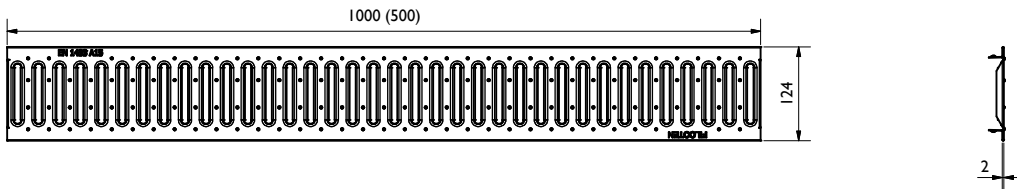
Rinne / channel - Maße / dimensions [mm]					
BG code	Typ	Höhe A height A	Höhe B height B	Länge length	Gewicht [kg] weight [kg]
10311000	0	115	115	1000	10,7
10311050	0 (0,5m)	115	115	500	5,4
10311001	1	115	120	1000	11,1
10311002	2	120	125	1000	11,6
10311003	3	125	130	1000	12,1
10311004	4	130	135	1000	12,7
10311005	5	135	140	1000	13,2
10311061	5-0	140	140	1000	13,4
10311051	5-0 (0,5m)	140	140	500	8,7
10311006	6	140	145	1000	13,6
10311007	7	145	150	1000	14
10311008	8	150	155	1000	14,4
10311009	9	155	160	1000	14,9
10311010	10	160	165	1000	15,5
10311062	10-0	165	165	1000	16

Legende / explanation:	
FCT:	FILCOTEN HPC
V:	verzinkter Stahl / galvanized steel
E:	Edelstahl / stainless steel
G:	Gußbeisen / ductile iron
H:	Holz / wood

Roste, Abdeckungen / grates, covers:

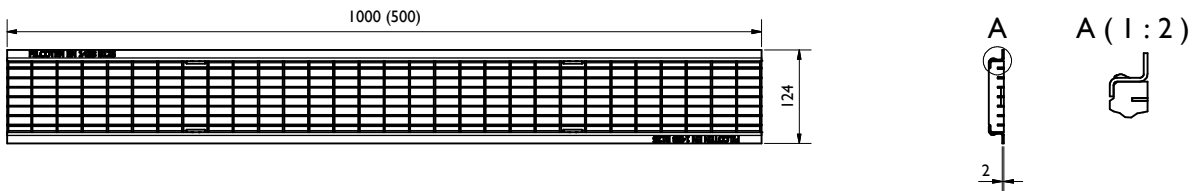
Stegrost / Slotted grating: SW 8/80, A15

BG code: V 17010200 (17010201), E 17010300 (17010301); 1,6 kg (0,8 kg):



Gitterrost / Mesh grating: MW 30/10, B125

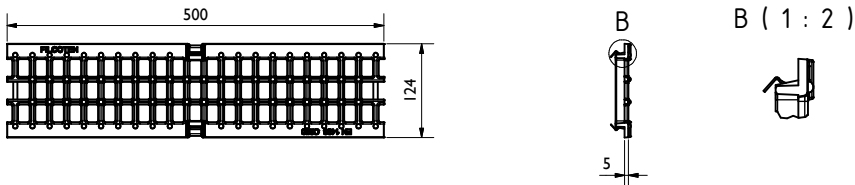
BG code: V 17010210 (17010211), E 17010310 (17010311); 2,6 kg (1,3 kg):



Gussrost / Ductile iron grating: MW 15/25, C250

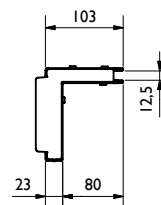
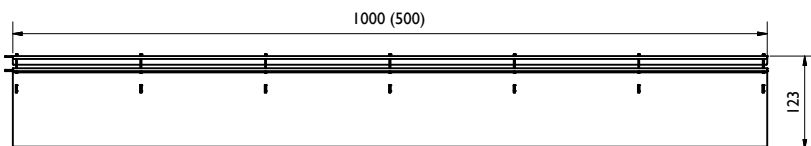
BG code: GJS 17010100; 2,5 kg:

BG code: GJS 17010150 KTL-beschichtet / KTL-coated; 2,5 kg:

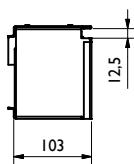
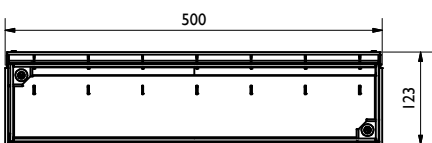


Schlitzaufsatz / slot top NW 100:

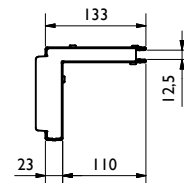
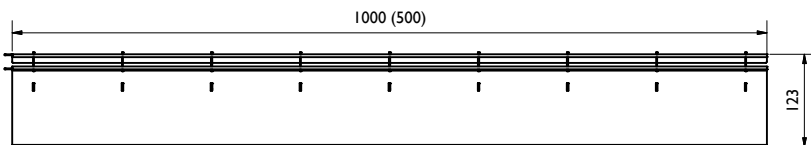
Schlitzaufsatz SW 12,5mm, SH 80, B125
BG code: V 17110237 (17110238), E 17110337 (17110338); 4,4 kg (2,2 kg):



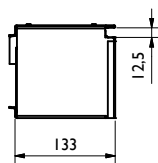
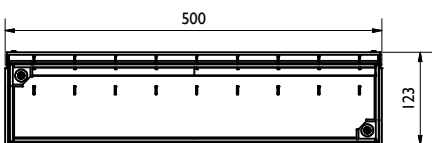
Revisionschacht SW 12,5mm, SH 80, B125
BG code: V 17110297, E 17110397; 4,1 kg:



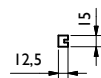
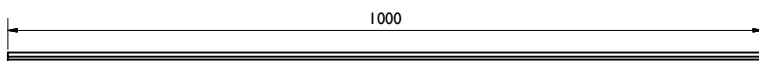
Schlitzaufsatz SW 12,5mm, SH 110, C250
BG code: V 17110243 (17110244), E 17110343 (17110344); 5,4 kg (2,7 kg):



Revisionschacht SW 12,5mm, SH 110, C250
BG code: V 17110281, E 17110381; 5,0 kg:



Bauzeitabdeckung / construction time barrier
BG code: H 37962; 0,1 kg:

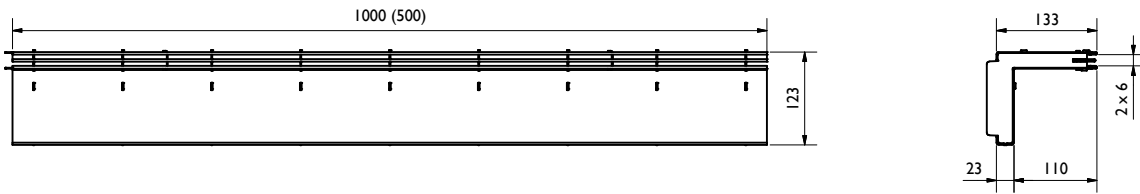


Abhebegriff / opening tool
BG code: V 13399; 0,1 kg:

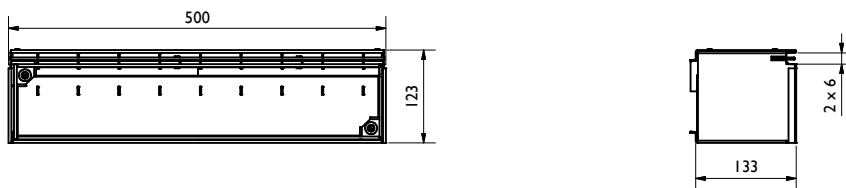


Design-Schlitzaufsatz / decorative-slot top NW 100:

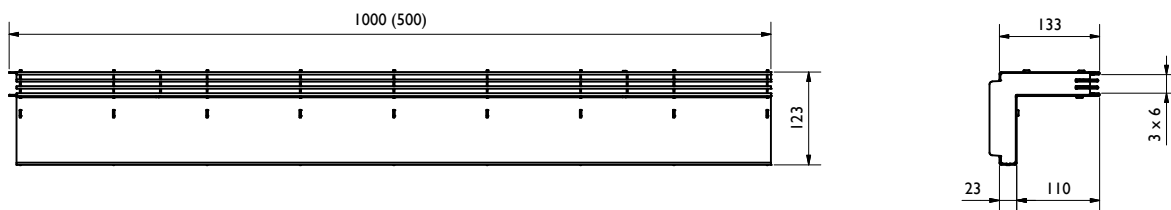
Schlitzaufsatz 2S / slot-top 2S, Heelproof, SW 2x6 mm, SH 110, C250
BG code: V 17111204 (17111205), E 17111304 (17111305); 5,8 kg (3,0 kg):



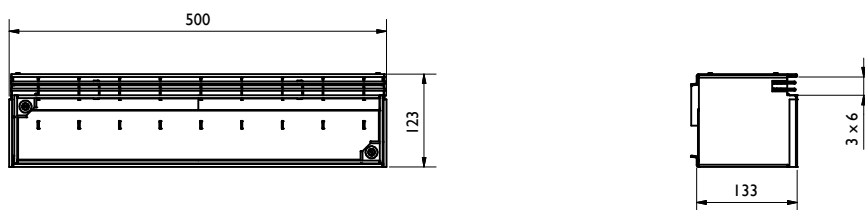
Revisionschacht 2S / revision-shaft 2S, Heelproof, SW 2x6 mm, SH 110, C250
BG code: V 17111206, E 17111306; 5,3 kg:



Schlitzaufsatz 3S / slot-top 3S, Heelproof, SW 3x6 mm, SH 110, C250
BG code: E 17111307 (17111308); 6,6 kg (3,3 kg):



Revisionschacht 3S / revision-shaft 3S, Heelproof, SW 3x6 mm, SH 110, C250
BG code: E 17111309; 5,6 kg:

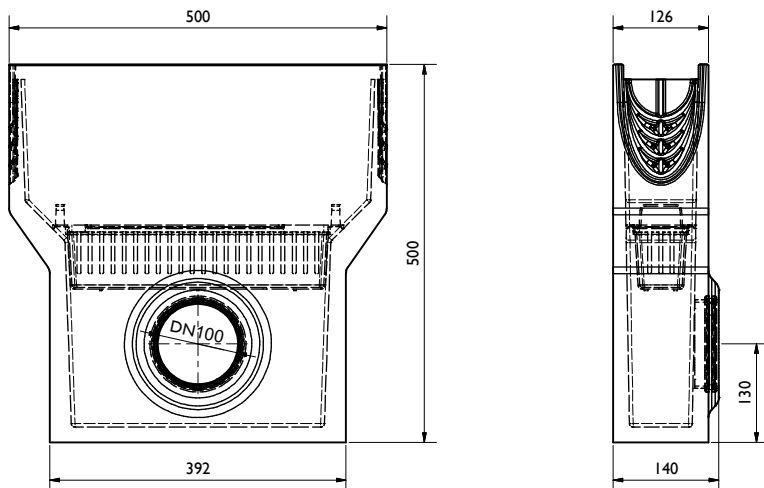


Abdeckband weiß / cover tape white
BG code: 37963

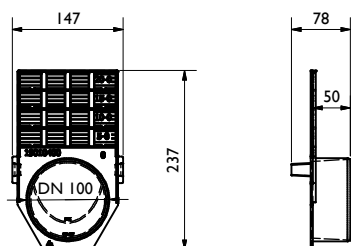
50mm Breite / width
33m Länge pro Rolle / length per roll

Zubehör / accessories:

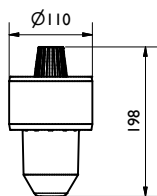
Sinkkasten / Sump unit:
inkl. Schlammemeier / incl. silt bucket (22515; 0,2 kg)
BG code: 10310094; 25,1 kg:



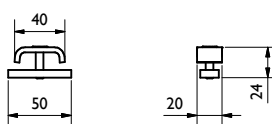
Stirn-/Endplatte / Front-/End cap:
BG code: PA 19010400; 0,12kg



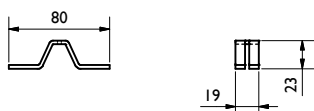
Geruchsverschluss für Bodenablauf /
Drain trap for bottom outlet:
BG code: PVC 30019 PVC; 0,2 kg:



Halteklammer für Guss-Maschenrost /
fixing clip for ductile iron mesh grate
BG code: 32068; 0,1 kg:



Patentklammer für Gitterrost /
locking clip for mesh grate
BG code: 32080; 0,1 kg:



Patentklammer für Guss-Maschenrost /
locking clip for ductile iron mesh grate
BG code: 32067; 0,1 kg:

